

Clear-Flex® II Stripping • MaxBullet® Mounting System
ImpacDor® • AirFlex® Insect Barriers • JetStream® Air Curtain
Pan Rack Cover • Refrigerated Trailer Door



INNOVATIVE WORKPLACE SOLUTIONS

FOOD SERVICE CATALOG

**Clear-Flex® II Strip
Doors Featuring
the MaxBullet®
Hardware System**
*The fastest and
easiest installation*



Aleco® ImpacDor®
*Attractive, durable
and tough*



Pan Rack Cover
*Convenient,
one zip cover --*



[Complete Food Service Solutions]

Save Energy, Save Money: Aleco® Strip Doors for Walk-in Coolers and Freezers

Strip doors are a proven check to rising energy costs, offering a simple effective solution for walk-in coolers and freezers. Adding a strip door to your walk-in will improve its performance and lower your operating costs.

The energy benefits gained by adding a strip door to a walk-in are so well established that many utilities companies offer an incentive for their use, some up to \$3 per square foot.

* Check with your local utilities company for details.

Features:

- Reduce energy costs
- Keep spoilage to a minimum
- Lower compressor cycles and defrost time
- Less frost build-up on coils
- Easy access and pass through
- NSF Certified

***Safer.
Stronger.
Cleaner.***



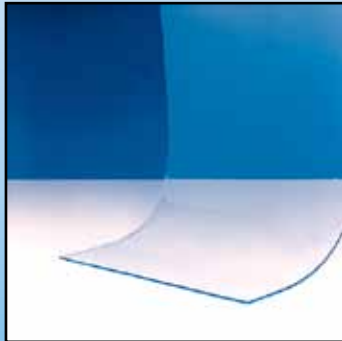
Our exclusive MaxBullet® mounting hardware

combined with our Clear-Flex® II strips provides the most energy-efficient, time-saving strip door on the market.



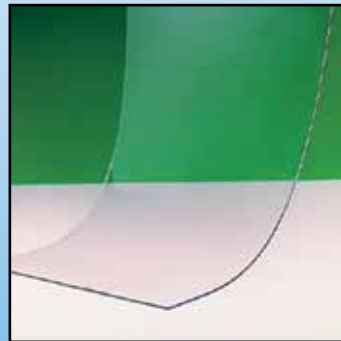
*NSF Certified

ALECO® offers a wide variety of strip formulas and types. For the food service industry, Clear-Flex® II is available in cooler, freezer smooth and freezer reinforced formulations for complete strip doors, bulk rolls and replacement strips:



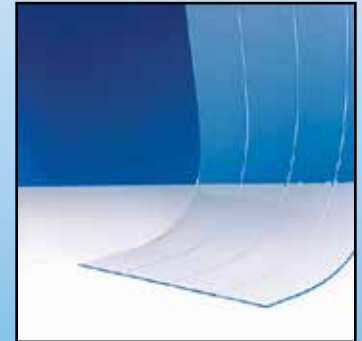
Cooler

- Formulated for cooler as well as indoor/outdoor applications, withstanding -10° to 150° F
- Our most versatile material
- Will not discolor in sunlight



Freezer Smooth

- For interior applications only
- Recommended for cooler or freezer applications and USDA inspected facilities
- Remains flexible in temperatures as low as -40°



Freezer Reinforced

- Utilizes nylon string extruded within the material to prevent elongation or shrinkage of material due to temperature variations
- For interior applications only
- Remains flexible in temperatures as low as -40° F
- Best for cooler/freezer applications
- Meets requirements for food service operations and USDA inspected facilities



The Aleco® TearAway® perforated pre-punched replacement strips allow you to neatly remove and replace individual strips for quick and easy replacement.



Aleco® PVC stripping is available in complete strip door systems, bulk rolls or replacement strips.



*NSF Certified

**Save Time.
Save Money.**

The Aleco® MaxBullet® mounting system combined with our Clear-Flex® II strips provide you the most energy efficient, time-saving strip door on the market.

Features:

- Easiest & quickest installation
- Unique bullet-shaped locking feature allows easy strip snap-on/snap-off
- Heavy-duty for daily use
- Initial hardware installation is 75% faster
- Strip replacement is 90% faster
- NSF Certified



*NSF Certified

Get Maximum Benefits



Aleco's MaxBullet® Aluminum

The aluminum hardware won't rust or corrode. Ideal for food service applications.



Aleco's MaxBullet® HTP Silver

Exclusive cross-linked polymer technology is cost-effective and super tough.

**LIFETIME WARRANTY on
MaxBullet® Aluminum and MaxBullet® HTP Silver**

(Limited warranty. Contact your Aleco representative for details.)

MAXBULLET® MOUNTING HARDWARE



Our most popular strip door featuring the exclusive MaxBullet® System is now available for retail sales!

40" x 84" Premium Energy-Saving Aleco® Strip Door Kit for Walk-In Coolers or Freezers

Each NSF-Certified system includes:

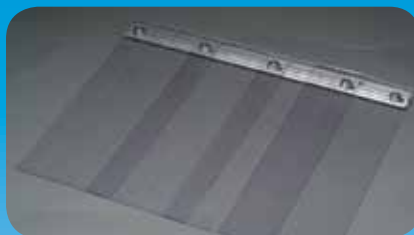
- One MaxBullet® Aluminum Hardware Mounting System *Makes Installation Fast and Easy*
- Ten 6" x .060 Reinforced Clear Strips *Specially formulated for low temperatures*
- Three Lag Screws for mounting

Additional Strip Door Mounting Systems



MaxSlide

The Aleco MaxSlide® Energy-Saving Strip Door System easily installs in minutes. Just install the bar, slide the HTP fasteners into the slot and start hanging strips. Complete kit with aluminum mounting hardware, the MaxSlide® won't rust or corrode.



Walk-In System

Traditional system consisting of a slotted all-aluminum bar with two lag screws and pre-cut, pre-punched strips. Just install the bar, slide the carriage bolts into the slot and start hanging strips. The pre-cut, pre-punched strips are secured with plated washers and nuts as you progress.



Loop Strip System

Quick install system consisting of a 40" round bar with two mounting brackets and fasteners. Pre-cut, pre-punched strips loop around bar and snap together with exclusive MaxBullet® type fasteners.

NSF

*NSF Certified

**Fast,
Easy
Installation**

The Aleco® Clear-Valu® ImpacDor® is the strip door alternative. Two crystal clear flexible PVC panels for walk-in coolers and freezers with a center overlap create an energy tight seal.

Features:

- Cooler or Freezer use; .080" & .120" thicknesses
- Energy-tight seal loses less air
- Stainless steel hinges guaranteed not to rust or corrode
- Easy to open; closes automatically
- Adjustable closing speed
- Crystal-clear, easy-to-replace panels
- Includes mounting hardware
- Easily field-adjusted for a perfect fit

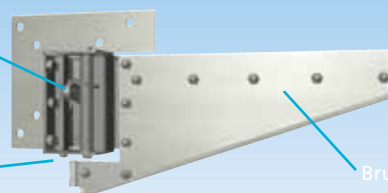
- ✓ PEDESTRIAN
- ✓ PALLET JACKS
- ✓ HAND CARTS



The Strip Door Alternative

Spring tensioned roller cam allows hinge to swing on even plane

Adjustable closing mechanism



Brushed stainless steel finish

LIFETIME WARRANTY on Clear-Valu Hinges

(Limited warranty. Contact your Aleco representative for details.)



The Aleco ImpactDor AL 125-1 is a lightweight and economical .063" thick satin anodized aluminum door with adjustable spring loaded hinges. Double-acting door designed for food service, retail and grocery applications where an attractive and affordable traffic door is needed. Drips, spills and smears simply wipe off, leaving a clean surface.

- ✓ PEDESTRIAN
- ✓ PALLET JACKS
- ✓ HAND CARTS

Door shown features optional push and kick plates. Frame not included.



Features:

- .063" Thickness
- Lightweight, satin anodized aluminum easily wipes clean
- Adjustable spring loaded hinges
- Strong, formed swing edge eliminates sharp edges
- Standard 8.5" x 11" window for safety and visibility
- Kick plates for added durability
- Options available. Consult factory.

***Attractive &
Affordable***

The Aleco® ImpacDor® FS-250 is a lightweight, durable and economical 1/4" (6mm) ABS door with reinforced spine that provides exceptional strength and longevity.

Features:

- Strong and long lasting
- Solid ABS body is impenetrable to moisture; reinforced spine
- Easily wipes clean
- Unique one-piece, solid core design eliminates chipping and peeling; door color consistent throughout material
- Smooth, quiet EZ Hinge system
- 125° swing for two-way traffic
- 7 1/2" x 10 1/2" standard windows
- Custom made to exact size for optimal performance
- Zinc-plated mounting hardware
- Stainless steel and other options available. Consult factory.

- ✓ PEDESTRIAN
- ✓ PALLET JACKS
- ✓ HAND CARTS

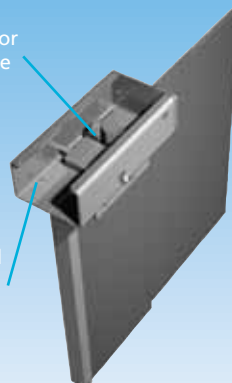
Choice of decorative colors:

Cloud Gray, Charcoal Gray, Black, Cadet Blue, Cocoa, Chocolate, Burgundy, Beige, Red, White, Royal Blue and Green

Lightweight Yet Durable

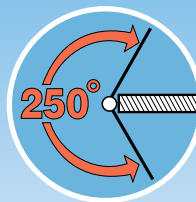


Offset pivot design allows for easy open/close operation



Stainless steel construction

Frame not included but available as an option.



**EZ Hinge
5-Year Warranty**

(Limited warranty. Contact your Aleco representative for details.)



The Aleco® ImpacDor® FS-500 is versatile and attractive 3/4" (19mm) door with wood core and durable laminates to match a wide range of restaurant and retail decor. The perfect solution for demanding food service, restaurant, retail and light industrial applications. Solid wood core resists palletized loads, yet remain light enough to swing freely in high volume foot traffic.

- ✓ PEDESTRIAN
- ✓ PALLET JACKS
- ✓ HAND CARTS

Choice of decorative colors:

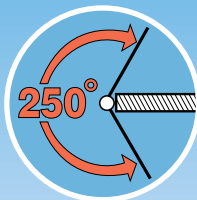
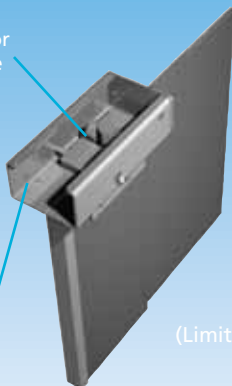
Cloud Gray, Charcoal Gray, Black, Cadet Blue, Cocoa, Chocolate, Burgundy, Beige, Red, White, Royal Blue and Green

Frame not included but available as an option.

Economic & Versatile

Offset pivot design allows for easy open/close operation

Stainless steel construction



EZ Hinge 5-Year Warranty

(Limited warranty. Contact your Aleco representative for details.)

Features:

- EZ Hinge system installs and operates effortlessly
- 125° swing for two-way traffic
- Attractive, 1/8" ABS facings are bonded to a 1/2" solid wood core
- Laminates available
- Lightweight design accommodates high volume foot traffic
- 11 1/2" x 15 1/2" dual pane windows
- Custom made to exact size to for optimal performance
- Zinc-plated mounting hardware
- Stainless steel and other options available. Consult factory.

The Aleco® ImpacDor® RD-175 is a durable, lightweight, attractive door with zinc plated hardware, insulated panel and full perimeter seal ideal for rack, push cart and pallet jack traffic.

Features:

- Internal PVC framework
- Sonic-welded ABS facings - no adhesive or screws
- Zinc plated mounting hardware (Stainless Steel upgrade available)
- Lightweight, insulated full thickness 1-3/4" (44mm) door
- Easily replaceable seals
- Constructed of USDA and FDA accepted materials
- EZ Hinge installs quickly on almost any jamb
- 14" x 16" standard windows

- ✓ PEDESTRIAN
- ✓ PALLET JACKS
- ✓ HAND CARTS
- ✓ LIGHT MOTORIZED

Choice of decorative colors:

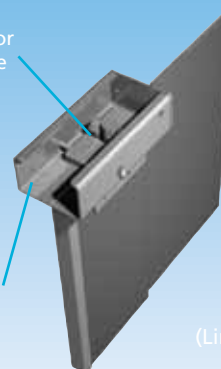
Cloud Gray, Charcoal Gray, Black, Cadet Blue, Cocoa, Chocolate, Burgundy, Beige, Red, White, Royal Blue and Green

Good Looking & Hard Working

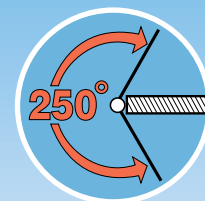


Offset pivot design allows for easy open/close operation

Stainless steel construction



Frame not included but available as an option.



EZ Hinge
5-Year Warranty

(Limited warranty. Contact your Aleco representative for details.)



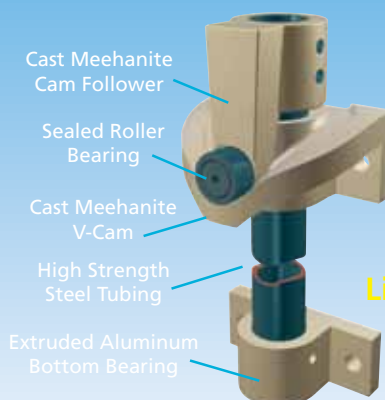
The Aleco® ImpactDor® FD-175 is a semi-flexible, full thickness door with a rubber sub-frame and full height mount assembly for the toughest industrial, commercial and retail use.

Features:

- Full thickness 1-3/4" (44mm) insulated construction
- Rubber sub-frame and flexible foam construction
- Durable, attractive ABS facings in many colors
- Full height mount assemblies
- Dual pane polycarbonate vision panels
- Full perimeter seals including leading edge
- Meets USDA guidelines
- Sealed bearing corrosion resistant V-cam hardware with 1-1/2" rise cam
- Stainless steel mounts
- 14" x 16" standard windows

- ✓ PEDESTRIAN
- ✓ PALLET JACKS
- ✓ HAND CARTS
- ✓ LIGHT MOTORIZED

For The Toughest Jobs



Frame not included but available as an option.

V-Cam Hinge
Lifetime Warranty

Aleco® Airflex® Insect Barrier

Lets Fresh Air In - Keeps Insects Out!
Lightweight, mesh material keeps air circulating while keeping out unwanted pests.

Features:

- Allows cool, fresh air in while keeping bugs and flying insects out
- 8" wide mesh strips are made of 12 oz. PVC coated polyester for long life and durability
- Easy access strips are installed quickly and easily using our exclusive, MaxBullet® HTP mounting hardware.
- Available in black or safety yellow
- 12" Clear PVC footer acts as a weight for straight hanging and can be field modified for a perfect fit
- Replacement strips available in 7' and 8' lengths

- ✓ PEDESTRIAN
- ✓ PALLET JACKS
- ✓ HAND CARTS



12" Clear Footer

**ALECO'S AIRFLEX®
INSECT BARRIER IS EASY
TO INSTALL, EASY TO
REPLACE, EASY TO USE!**



***Let Air In!
Keep Flying
Insects Out!***



The Aleco® Energy-Saving JetStream® Air Curtain produces a high-speed air barrier, dividing areas into two independent temperature zones. Levels of interior air conditioning/heating are maintained, increasing comfort and saving energy.

Control Your Environment



ONE YEAR LIMITED WARRANTY
Contact Your Aleco® Representative for Details



Available in
Stainless Steel



Optional plunger
switch for door
activation available

Features:

- Prevents cool or warm air loss
- Protects against dust, smoke, fumes and flying insects
- Beige baked enamel or stainless steel finish available
- 3-Position switch (off/high/low)
- Adjustable airflow with directional plenum
- Effective up to 8 ft. heights
- 5 ft. long 110v prewired grounded plug
- Available in 36", 42", 48" and 60" models

PAN RACK COVERS



SUPER ECONOMY MODEL 477404

- For cooler use only
- Made of clear .012" thick long-lasting PVC
- Single heavy-duty zipper
- Lock-stitched reinforced seaming
- Secures open with hook & loop fastening system



STANDARD MODEL 477424

- For cooler or freezer use
- 3-ply 10 oz. nylon reinforced material
- Full view front panel
- Lock-stitched reinforced seaming
- Single heavy-duty zipper
- Secures open with hook & loop fastening system
- Double stitched at stress points



ECONOMY MODEL 477414

- For cooler use only
- 12-mil clear PVC with 14 oz. nylon reinforced material at all stress points
- Single heavy-duty zipper
- Secures open with hook & loop fastening system
- Lock-stitched reinforced seaming
- Double stitched at stress points



HEAVY-DUTY MODEL 477434

- For cooler or freezer use
- 3-ply 14 oz. nylon reinforced material
- Full view front panel
- Lock-stitched reinforced seaming
- Single heavy-duty zipper
- Secures open with hook & loop fastening system
- Double stitched at stress points

**Help Increase Your
Pan Rack Cover Sales with
Aleco's Exclusive Display System**

**One Zip
Quick**

Display includes:

- Display box and header
- (8) Individually boxed Economy Pan Rack Covers



REFRIGERATED TRAILER DOOR



ALECO® Refrigerated Strip Door with exclusive Scratch-Guard® ribbed stripping saves time and money. Designed with our exclusive MaxBullet® Mounting System and Scratch-Guard® ribbed stripping, the MaxBullet® Refrigerated Strip Door System installs quickly and simply.

***Installs Faster.
Lasts Longer.
Saves Energy.***

8' x 8' kit includes 8" x .198 Low Temp Scratch-Guard® Ribbed Strips with 50% overlap; MaxBullet® Trailermount Hardware Kit; Hi-Viz® Fluourescent Safety Rings



Hi-Viz® Fluourescent Safety Rings

are placed on the bullets of the MaxBullet® hardware to indicate the top of the door opening in low light conditions.

Features:

- Scratch-Guard® ribbed material offers superior scratch-resistance increasing long-term visibility
- Maintain better temperature control
- Improve energy efficiency
- Reduce maintenance costs on refrigeration units
- May be used with conventional or roll-up swing doors
- MaxBullet® hardware makes installation quick and easy

To see our full line of Food Service and Industrial Products,
visit us online at www.aleco.com.



STRIP DOORS

Complete Doors and Kits
MaxBullet® Strip Door Hardware
Scratch-Guard® Ribbed Material
Hi-Viz® Safety Products
Bulk PVC Rolls
MaxMagic Bulk Roll Template Kit
Truck Doors & Curtains
Insect Barriers
Replacement PVC Strips
Aleco® TearAway® PVC Strips



IMPACDOR®

Industrial & Food Service
Replacement PVC Panels

INDUSTRIAL PARTITIONS & CURTAINS

Sliding Partitions
Custom Enclosures

JETSTREAM® AIR CURTAINS

PAN RACK COVERS

TANK LINER PVC MATERIALS

FLOOR PROTECTION PRODUCTS

Runner
Chairmats

www.aleco.com • email: info@aleco.com
2720 E. Avalon Ave. • Muscle Shoals, AL 35661
Ph / (800) 633-3120 • (256) 248-2402
Fax / (800) 750-9616 • (256) 248-2410